



Jan-Remi Fromentin
Global Sales Director 14.0 Solutions
jan-remi.fromentin@ifm.com



moneo

The new IIoT platform for industrial evolution

Agenda:

ifm strategy for IIoT / Industry4.0

moneo outlook

Q & A



ifm company overview



Industrial automation product portfolio

Process sensors



Condition monitoring systems



Industrial communication



Connection technology



Systems for mobile machines



Identification systems



Industrial imaging



Sensors for motion control



Position sensors



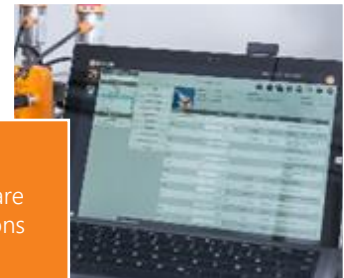
Safety technology



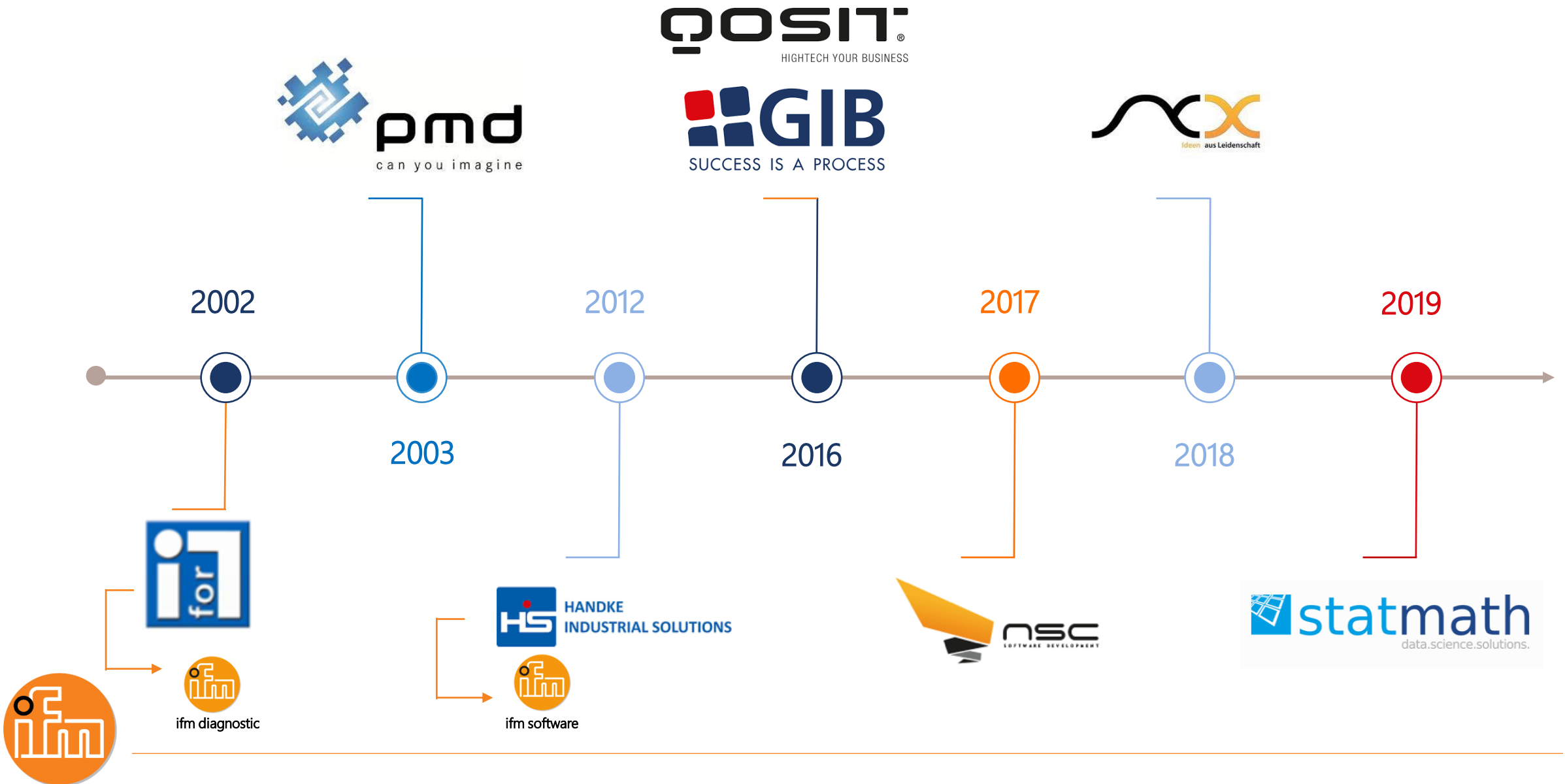
Accessories



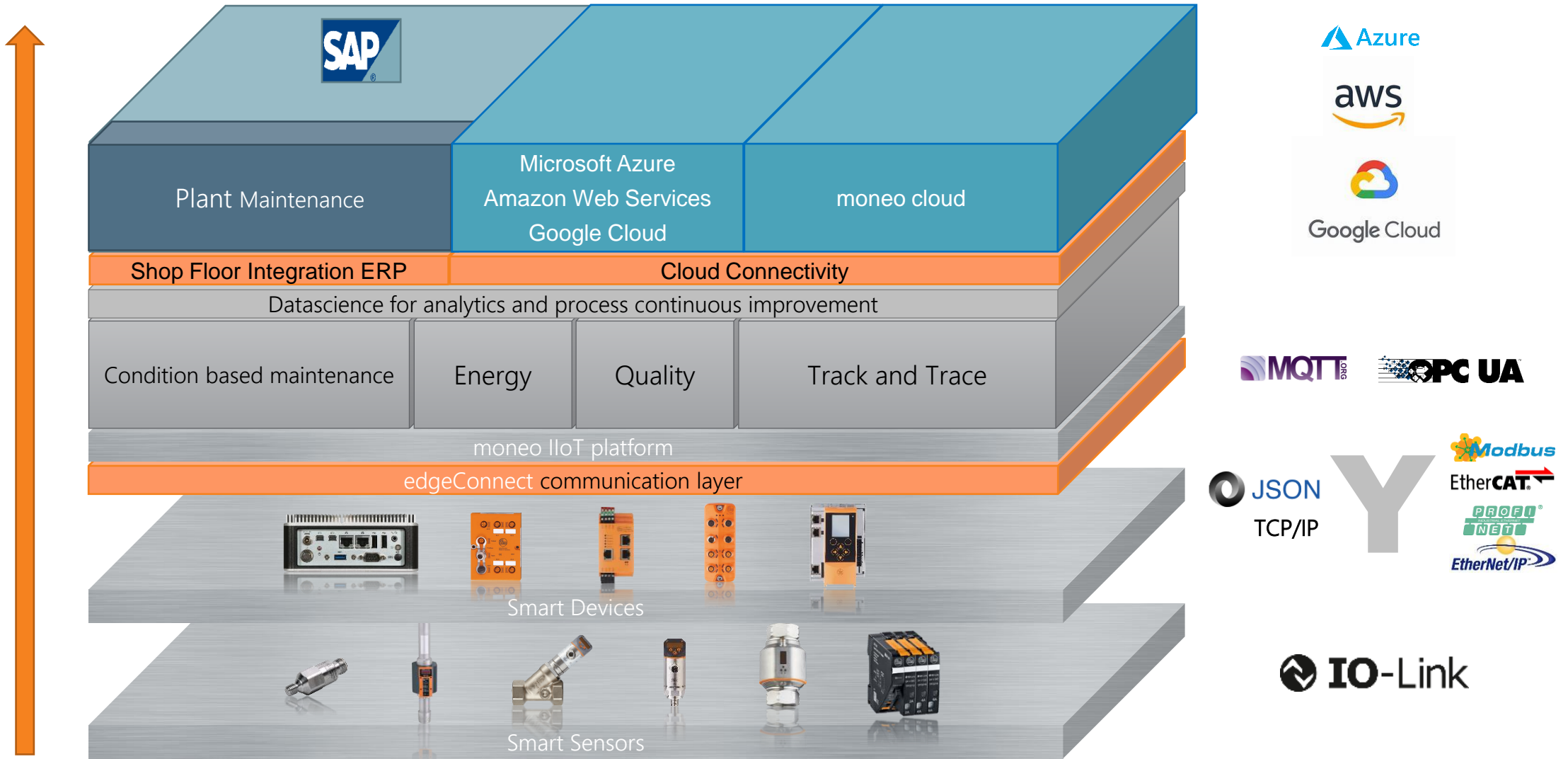
Software solutions



Acquisition of I4.0 core technologies



From sensor to business processes



IO-LINK : the digital path to sensors and actuators

Standardized IEC61131-9

> 300 manufacturers

No external influence of the signal

No measured value losses

Easy sensor replacement

Tamper free

Identification

Wire break detection / diagnosis

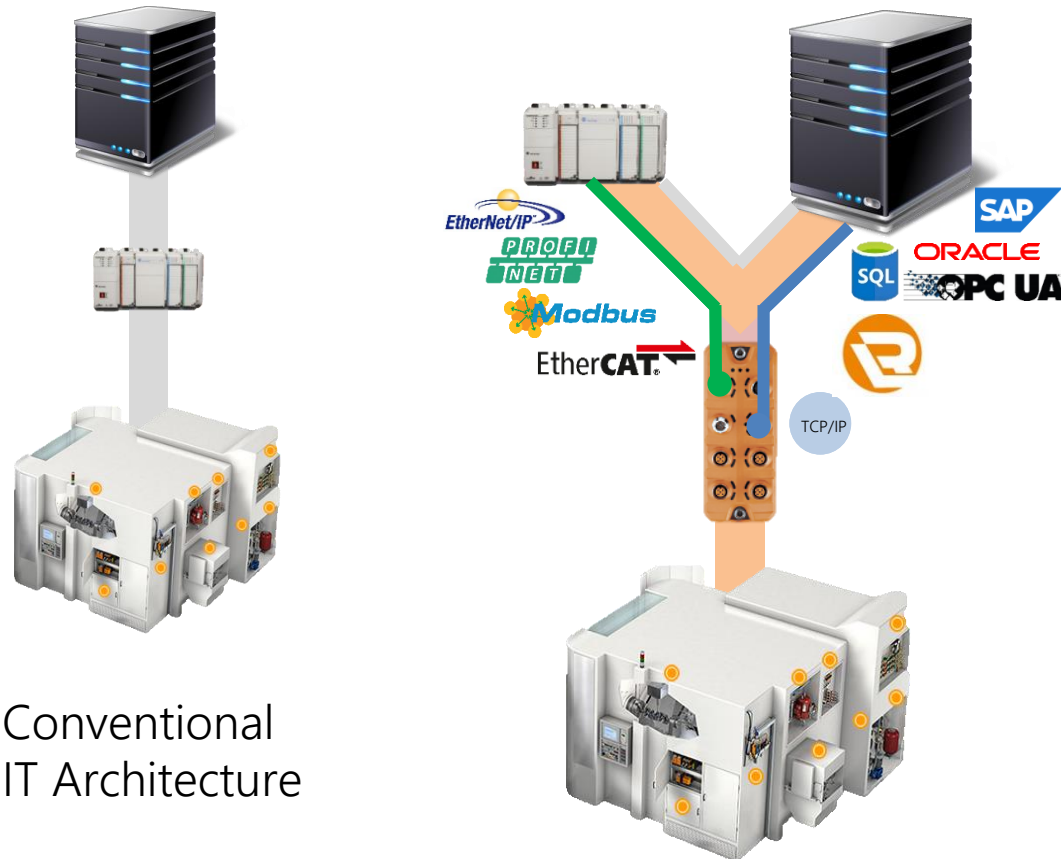
0000100010
0001111001
0010100011



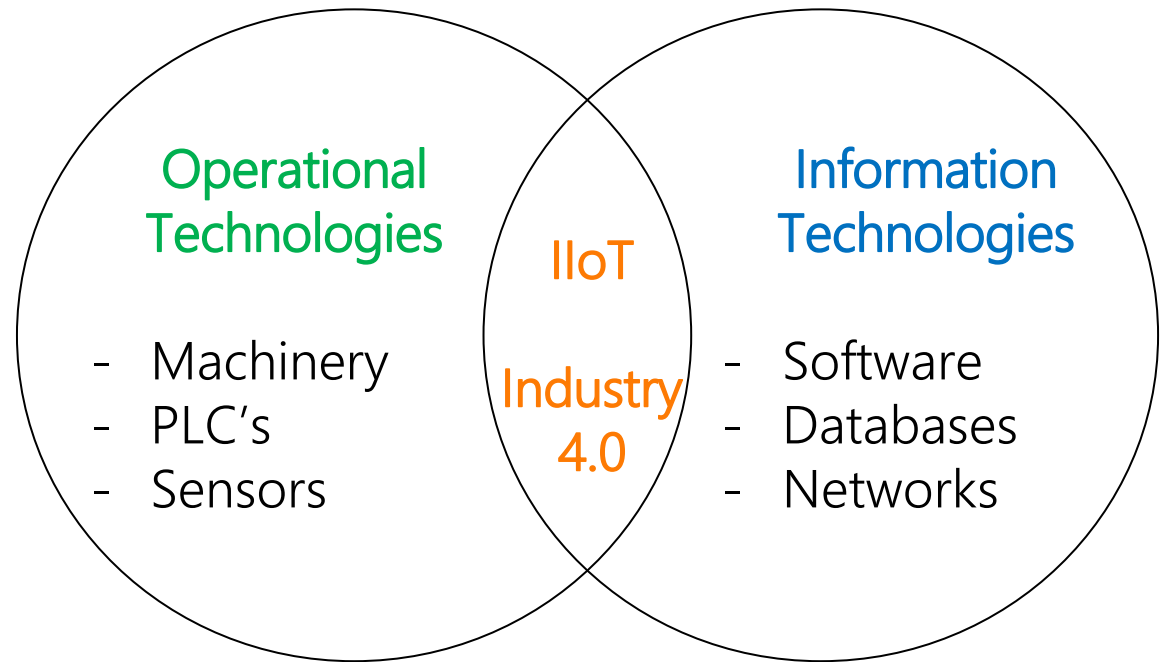
Y path : the ifm way to link IT and OT

FLEXIBILITY, INTEROPERABILITY

Flexible communication across a variety of hardware and software platforms:

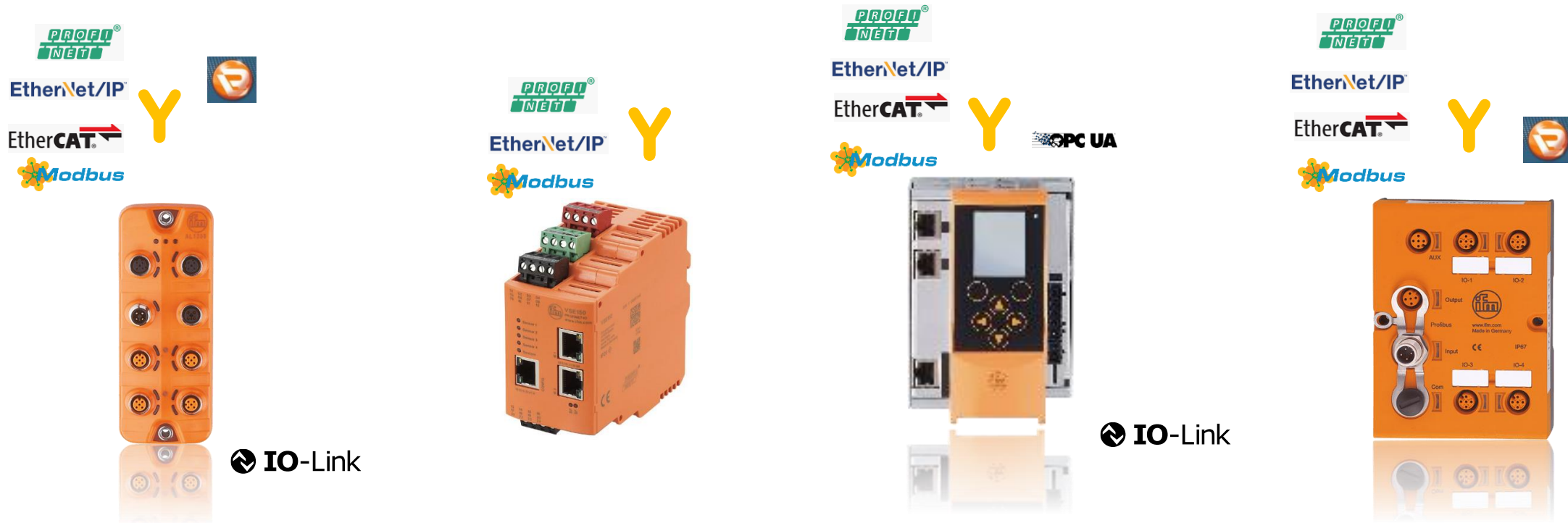


Conventional IT Architecture



Smart devices using the Y path

Large choice of smart devices for pre-processing operations



IO-Link masters

Vibration diagnostic

Smart PLC

RFID Hubs



One platform for all requirements.



Convenient real-time maintenance, energy and quality monitoring



Simple plant monitoring with data flow modeler for calculated values / KPI



User-friendly IO-Link sensor parameter setting



Intelligent warning and alarm system using data science tools



Easy diagnostic of vibration data with analytical tools

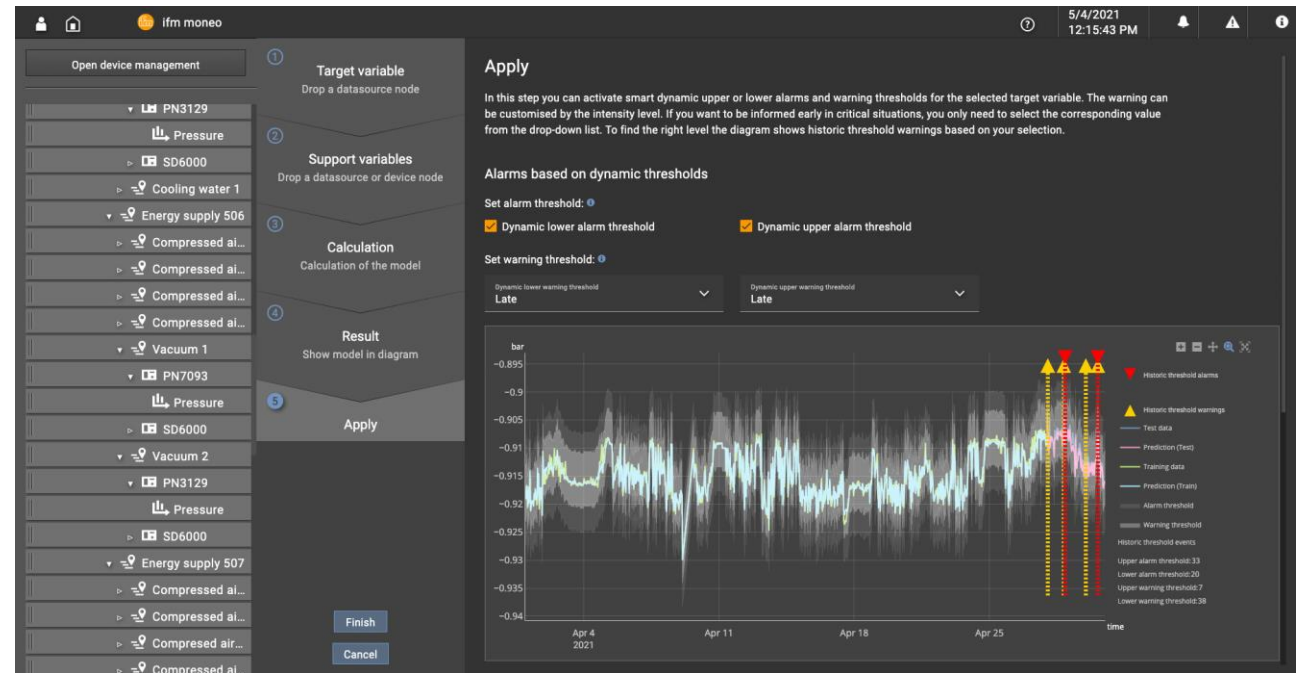


Moving towards Artificial Intelligence

moneo DataScience toolbox : SmartLimitWatcher

5 Steps Setup Process

1. Selection of desired target variable for monitoring
2. Add support variables, which are suitable to control the process behavior of the target
3. Training of models (non-linear/linear)
4. Result evaluation and best-fit model selection
5. Set and activate the dynamic lower and upper alarms



moneo benefits



Easy installation and implementation

- Delivered as a package for Windows10 or as an appliance (virtual or physical)
- No code, only parametrization using a web interface



Easy creation and customization of dashboards

- On-line contextual help in 10 languages
- User-friendly interface, drag and drop, copy and paste functions
- No training needed, no need for automation engineering resources



Easy set-up of calculated values and KPI

- Extensive library of operators, templates defined by users



Quick and easy extension

- Scalable by just adding datapoints and connectors - southbound connectors with 65+ libraries (LR-Agent)
- Easy on-boarding of additional ifm devices (Vibration diagnostic unit, IO-Link masters) in 3 clics



Easy integration in IT environment

- Northbound connectors : http, MQTT and OPC UA



Solution for all

- Solution for all kind of users, for maintenance, quality, energy, production monitoring



Thank You & Any Questions

